



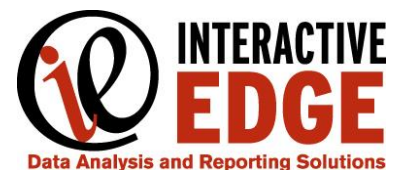
**XP3<sup>®</sup>**

## **7.0 Release Overview**

**Abstract:** This document provides a detailed overview of XP3 Suite Version 7.0. Sections within the document detail each new enhancement, describe compatibility issues related to updating, and list all updated requirements. This document is intended for all current and prospective users and IT personnel who aid in the implementation and deployment of Interactive Edge's XP3 Suite.

### **Contents**

Introduction.....	1
New Features & Enhancements.....	1
System Requirements.....	5



## Introduction

Interactive Edge has enhanced its XP3 product offering based on user feedback. XP3 Suite Version 7.0 includes enhancements to the following application areas:

- XP3 Presentation Builder
- XP3 Report Builder

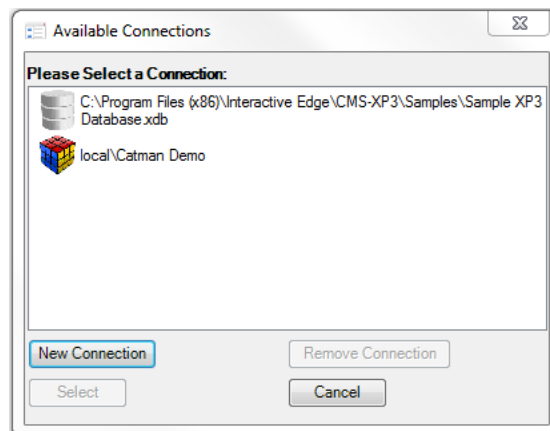
Structural changes to XP3 were required to support the significant enhancements to the application. As a result, presentations and reports developed in XP3 6.4 or earlier will not run on XP3 7.0. All active presentations and reports will need to be re-built in XP3 7.0. The structure of XP3 databases has not changed. Interactive Edge believes these latest enhancements continue to strengthen XP3 Suite's position as the premier data analysis and presentation building tool on the market today.

## New Features and Enhancements

This section outlines the specific enhancements and features contained in this release. Each enhancement includes a detailed description of affected components, features and benefits. Screenshots are provided where applicable for the particular feature being described.

### New Features

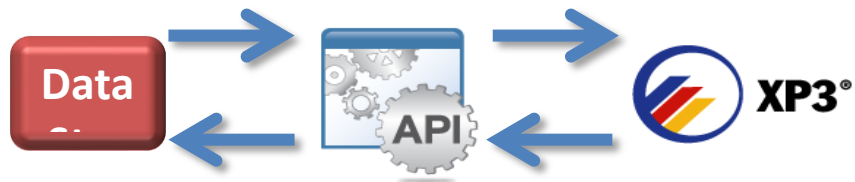
- **Multiple Simultaneous Connections** – In previous versions of XP3, there was only support for one database connection which cause the user to consolidate the data in one place to be useful. Users now have the ability to connect to multiple data sources, housed in multiple databases eliminating the need to consolidate the data.



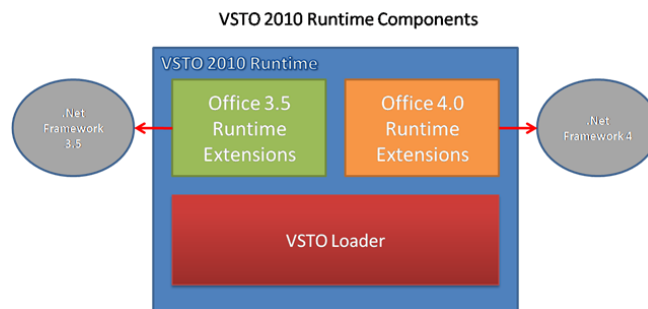
- **Native PowerPoint Charting** – Previously every XP3 chart had an Excel workbook embedded behind it, and each workbook points back to an embedded instance of Excel. Now, XP3 Charts will store their data in an Excel workbook, which is embedded directly in the PowerPoint file. The charts will refresh faster and there are fewer instances of Excel to manage.

- **Open Integration Of New Data Sources** – Any data source which is either in a compatible format or has a well-documented schema and querying capabilities can be added as a data source with minimal development.

**Note:** Connectivity is subject to provider licensing restrictions.

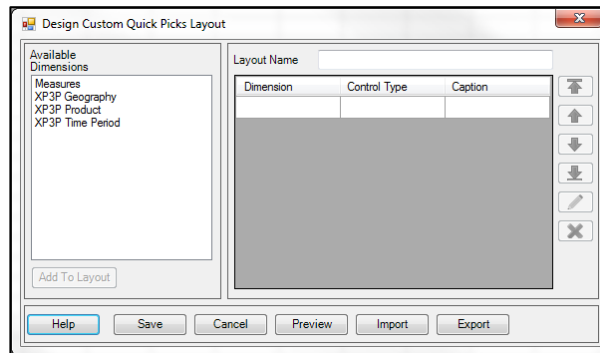


- **Binary Office Integration** – Tighter integration through the Office API using VSTO technology.

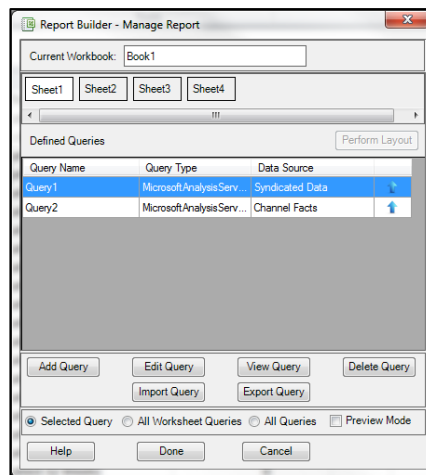


- **Improved Time Analytics and Personalization** – Time analytics can be performed directly against Time Period fields. There is no longer a need for additional segmentation or manipulation at the data source level. Future trends will also automatically be time aware, using the same mechanism.
- **ABC/XYZ in XP3 Report Builder** – When creating a query, users have the option to truncate the common text prefixes and/or suffixes of data selections made for any dimension. If either or both options are activated, XP3 will determine if there is a common prefix and/or suffix to all the items in the selection and will remove this prefix and/or suffix before the query is generated.
- **Packing/Unpacking in XP3 Report Builder** – The Packing feature allows you to share an entire Excel workbook with another user that has XP3 Presentation Builder or XP3 Presentation Viewer. The packed presentation contains the database information and the Microsoft Excel workbook. Packing a workbook allows another user, who has XP3 Report Builder to view the workbook, as well as source the workbook with the data.

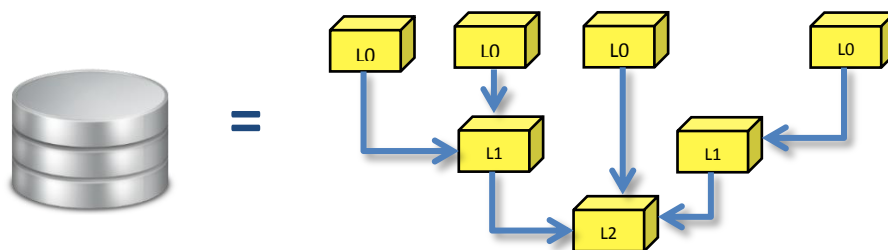
- Customizable Quick Picks in XP3 Report Builder** – XP3 Builders can create their own Quick Picks interface in Excel. Quick Picks allows the user to select the predefined selection sets of the current presentation. Selections can include Retailer or Account, Category, Time Periods and Measures. Users can export their Quick Picks layout to share with other Builders.



- Query Management** – It is now possible to maintain multiple queries across multiple worksheets from one interface. This enables users to perform fewer clicks when making changes to queries in a workbook. Queries can also be exported to share with other builders.



- Multiple Hierarchy Support** – Data can now be part of any number of hierarchies. All hierarchies defined in the data source are automatically picked up and available for querying.



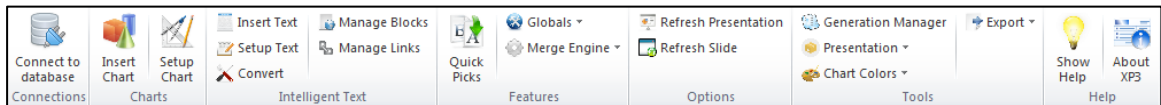
## Enhancements

### General

- **Presentation and Report Generation** – Dimension information can be incorporated into the filenames for generated presentations and reports.
- **Data caching** – All of the metadata is cached during a session. During bulk operations, recurring data is cached after initial access to reduce traffic and redundancy, and increase performance.

### XP3 Presentation Builder

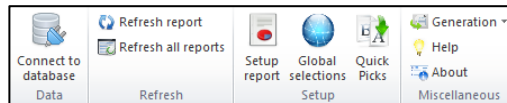
- **New Visual Look** – Updated ribbon and interface in XP3 Presentation Builder



- **Chart Colors** – Colors are easier to assign to charts.
- **ABC/XYZ** – When creating a query or chart, users have the option to truncate the common text prefixes and/or suffixes of data selections made for any dimension.

### XP3 Report Builder

- **New Visual Look** – Updated ribbon and interface in XP3 Report Builder



- **Refreshing Queries** – Users can now refresh an individual query without having to refresh the entire worksheet.

# System Requirements

This section covers the software and hardware requirements associated with the client applications in XP3 Suite. These include XP3 Builder/Viewer, XP3 Data Tools and XP3 Automation.

## General Hardware and Software Requirements

General Requirements	
<b>Processor</b>	Intel® Pentium® 4 or AMD Athlon® 64 processor (2 GHz or faster)
<b>Operating System</b>	Windows® 7 with Service Pack 1 Windows® Server 2008 Service Pack 2 Windows Server 2012
<b>Microsoft® Office</b>	Office 2010, Office 2013
<b>Memory</b>	2 GB of RAM (4 GB recommended)
<b>MDAC<sup>1</sup></b>	2.8
<b>Microsoft .NET Framework</b>	4.0
<b>Microsoft SQL Server Express Edition</b>	Microsoft SQL 2005 Server Express Edition Service Pack 2
<b>Visual Studio 2010 Tools for Office Runtime</b>	10.0.50903

<sup>1</sup>Included in the XP3-Full installation – if the machine is installed with MDAC 2.6 or higher, Jet 4.0 must be installed to create and manipulate Microsoft Access-based XP3 databases.

## Database Server Requirements

### Software Requirements

DBMS	Version Tested
Microsoft SQL Server	2005 SP2/2008
MSDE (Microsoft SQL Server Desktop Edition) <sup>2</sup>	2008 R2
Microsoft SQL Server Analysis Services Enterprise/Standard Edition	2005 SP2/2008
Visual Studio 2010 Tools for Office Runtime	10.0.50903

<sup>2</sup>Included in the XP3-Full installation

## Recommended Hardware Configurations

The relational engine (RDBMS), Microsoft Analysis Services (MSAS) and XP3 are running on the same machine.	
<b>Processor</b>	4 Units – 2.0 GHz or more
<b>RAM</b>	8 GB <sup>1</sup>
<b>HDD</b>	Depends on data volume